



BENZ MINING
CORP.

SEIZING A BELT-SCALE OPPORTUNITY

UPPER EASTMAIN
GREENSTONE BELT
QUEBEC

August 2022

DISCLAIMER AND FORWARD-LOOKING STATEMENTS



This presentation contains forward-looking statements and forward-looking information within the meaning of applicable securities laws. The use of any of the words "Expect", "Anticipate", "Continue", "Estimate", "Objective", "Ongoing", "May", "Will", "Project", "Should", "Believe", "Plans", "Intends" and similar expressions are intended to identify forward-looking information or statements. More particularly and without limitation, this presentation contains forward looking statements and information concerning the expected activities of Benz Mining Corp.

The forward-looking statements and information are based on certain key expectations and assumptions made by Benz Mining Corp. Although Benz Mining Corp. believes that the expectations and assumptions on which such forward-looking statements and information are based are reasonable, undue reliance should not be placed on the forward-looking statements and information because Benz Mining Corp. can give no assurance that they will prove to be correct. By its nature, such forward-looking information is subject to various risks and uncertainties, which could cause the actual results and expectations to differ materially from the anticipated results or expectations expressed. Readers are cautioned not to place undue reliance on this forward-looking information, which is given as of the date hereof, and to not use such forward-looking information for anything other than its intended purpose. Benz Mining Corp. undertakes no obligation to update publicly or revise any forward-looking information, whether as a result of new information, future events or otherwise, except as required by law.

The information in this announcement that relates to exploration results and the Mineral Resource was first reported under the JORC Code by the Company in its prospectus released to the ASX on 21 December 2020 and in its announcements dated 23 December 2020, 13 January 2021, 11 February 2021, 4 March 2021, 5 May 2021, 26 May 2021, 7 July 2021, 2 August 2021, 26 August 2021, 14 October 2021, 20 October 2021, 28 October 2021, 3 November 2021, 2 December 2021, 28 January 2022, 3 February 2022 and 16 February 2022 . The Company confirms that it is not aware of any new information or data that materially affects the information included in the original market announcement and confirms, in relation to the Mineral Resource, that all material assumptions and technical parameters underpinning the estimate continue to apply and have not materially changed. The Company confirms that the form and context in which the Competent Person's findings are presented have not been materially modified from the original market announcement.

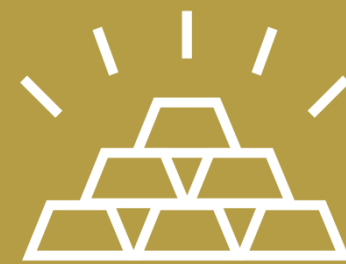
This presentation has been authorized for release by the Board of Benz Mining Corp. and is effective 17 February 2022.

INVESTMENT HIGHLIGHTS



MULTI-COMMODITY BELT SCALE OPPORTUNITY

- Emerging multi-million ounce gold camp, plus lithium, nickel and copper potential confirmed.
- Over 250km² tenure and >45km strike across Upper Eastmain greenstone belt.
- Significant discovery potential in Quebec



RESULTS ACHIEVED TO DATE

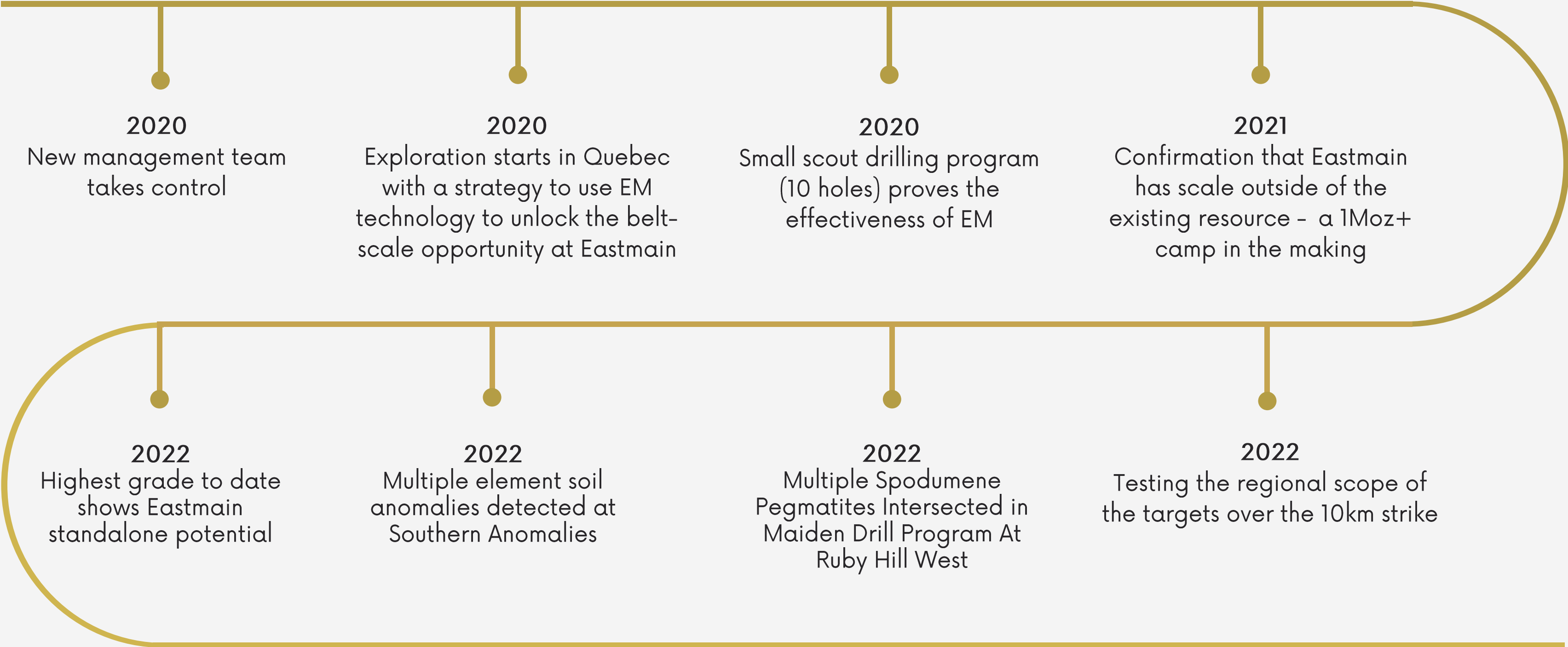
- 400+ DHEM conductors and 6 mineralized gold zones have been discovered by Benz.
- Regional exploration shows strong untested EM anomalies.
- Confirmed lithium pegmatite discovery in February 2022.



PROVEN DISCOVERY APPROACH

- Electromagnetics (EM) successfully employed to make discoveries at new depths.
- EM is a technique that is both low cost and minimally invasive to the surrounding environment.

THE STORY SO FAR



QUEBEC – WORLD CLASS LOCATION



Quebec is ranked 6th on 2020 Fraser Institute Mining Investment Attractiveness Index (released in Feb 2021)

Eastmain Belt is still relatively underexplored despite being surrounded by million ounce mines

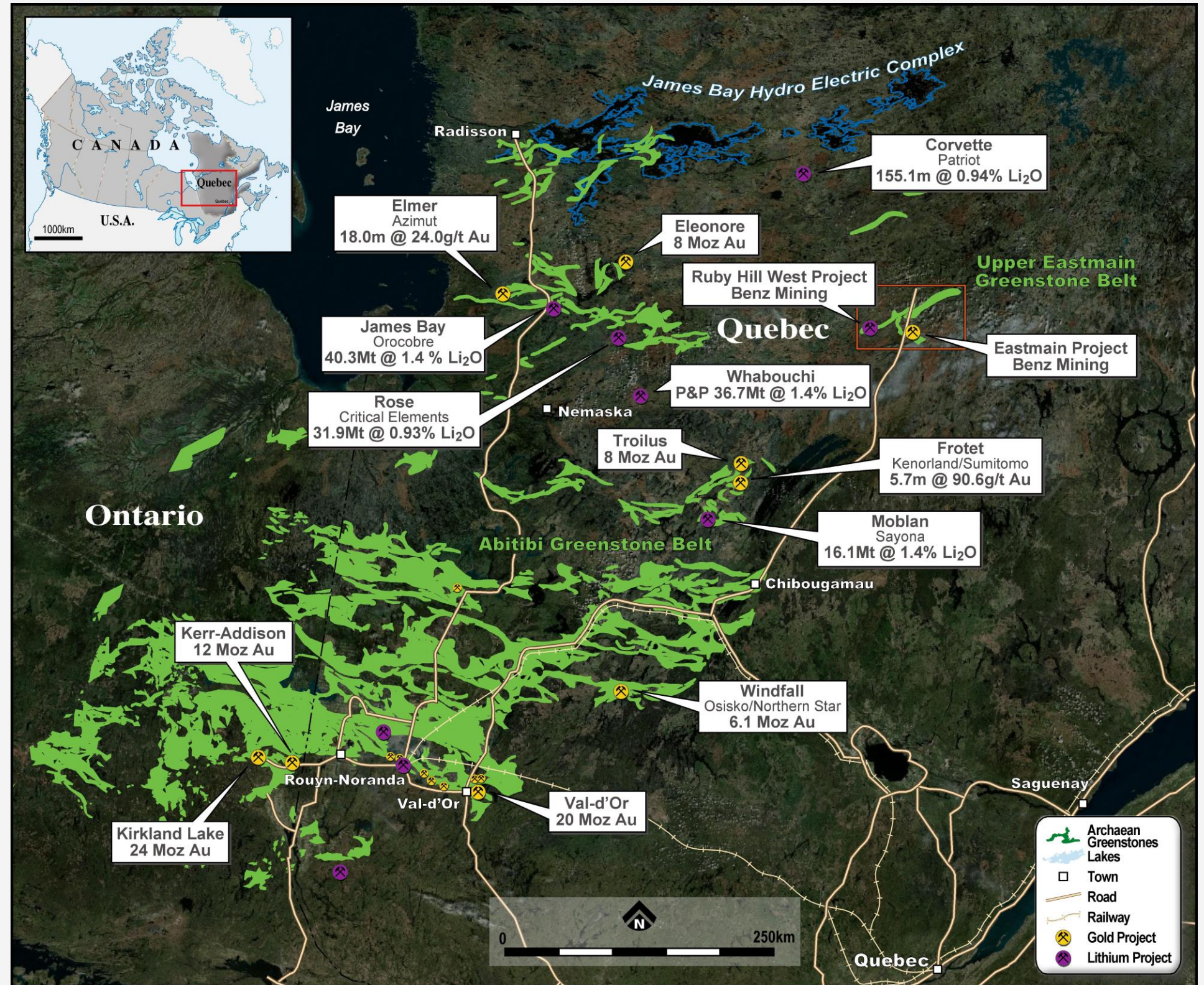
Over 200Moz gold produced historically in the Abitibi.

Outstanding infrastructure, including hydropower and all-weather access road to Benz operations.

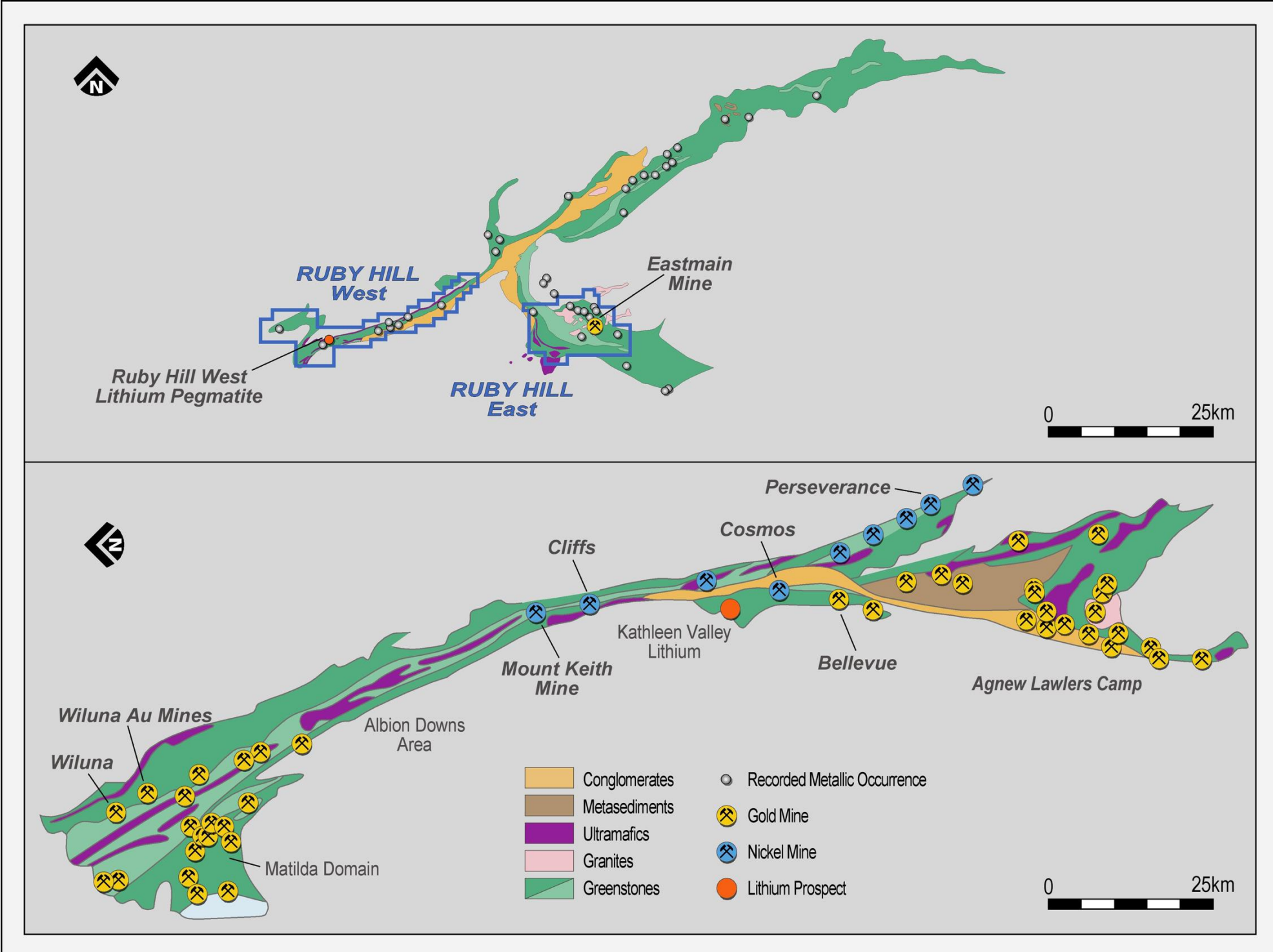
Increasing Activity in the region on Gold and Lithium exploration

Cree First Nation supportive of mining; Société du Plan Nord (SPN), a government initiative to fund development projects in Northern Quebec.

Flow through funding – raising capital at up to 100% premium.



THE MAKING OF A MINING DISTRICT



QUEBEC'S UPPER EASTMAIN BELT

- Upper Eastmain Belt – first gold discovered 1969
- Historically explored for gold, limited base metals/lithium exploration
- 60 years of sporadic exploration - less than 200,000m of drilling historically (120,000m at Eastmain deposit)
- Benz Mining controls ~30% of greenstone

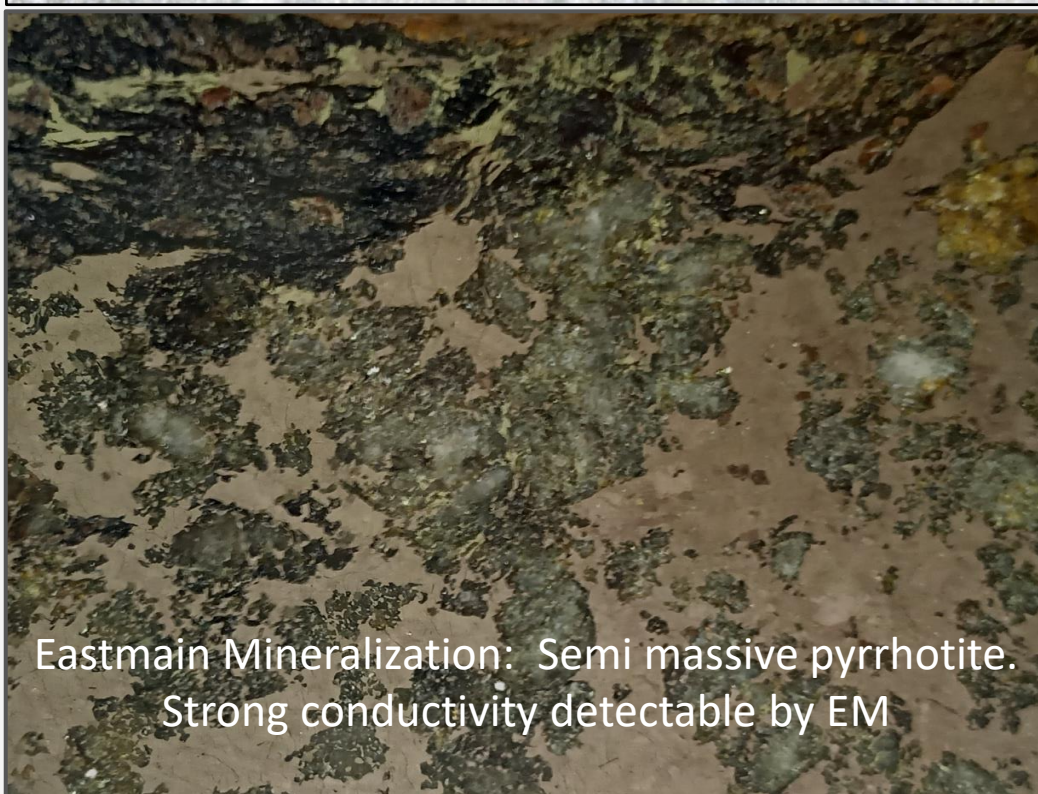
WESTERN AUSTRALIA'S AGNEW WILUNA BELT

- Agnew-Wiluna Belt has a 44Moz gold endowment
- First gold discovered 1886; later explored for base metals (1970's nickel boom)
- 115 years of continuous exploration
- Home to BHP Nickelwest, Goldfields, Western Areas, Bellevue Gold, Liontown

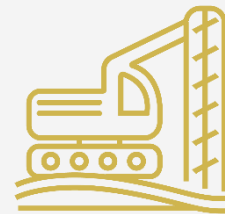
DISTRICT SCALE DISCOVERY OPPORTUNITY REVEALED THROUGH ELECTROMAGNETICS



Eastmain Mineralization: Quartz Sulphide (Pyrrhotite) and Visible Gold



Eastmain Mineralization: Semi massive pyrrhotite. Strong conductivity detectable by EM



Gold at Eastmain is associated with pyrrhotite. The pyrrhotite, with strong conductivity, is detectable by EM. Previous operators based drilling solely off geological analysis, not geophysics



Benz has proven its electromagnetics (EM) strategy with multiple discoveries made to date at the Eastmain deposit



EM allows Benz to drill wide spaced (100 x 100m), up to 900m deep holes and confidently hit high grade ore



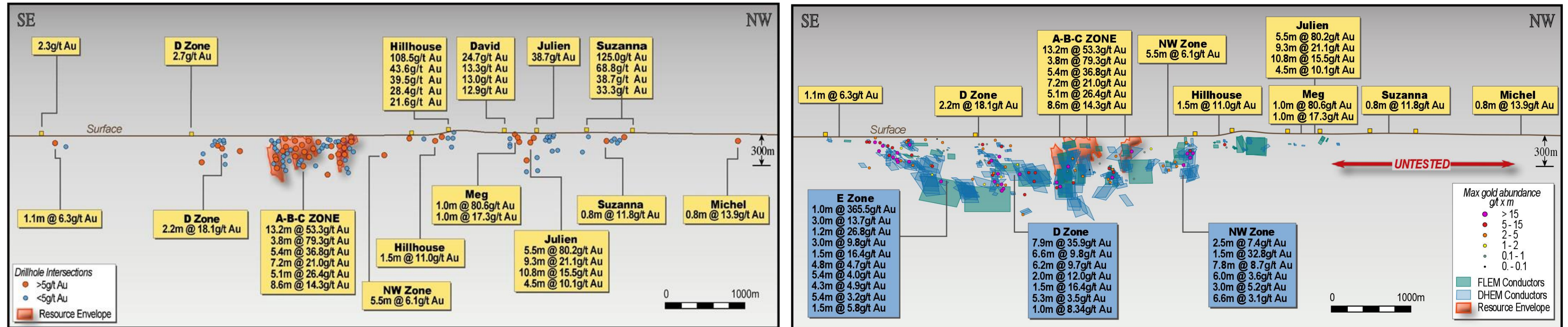
100% success rate targeting through electromagnetics; 6 new mineralized zones discovered by Benz to date



A proven exploration technique: EM enabled Bellevue Gold (ASX:BGL) to discover an exceptionally high-grade gold system

PROVEN GOLD EXPLORATION STRATEGY

BENZ HAS DELIVERED SIGNIFICANT FOOTPRINT GROWTH IN JUST 18 MONTHS



2020 - BENZ TAKES OWNERSHIP

AS AT JUNE 2022 - BENZ RESULTS TO DATE

Eastmain proven to be a unique deposit where **electromagnetics** (used for targeting) **can directly lead to high-grade gold**

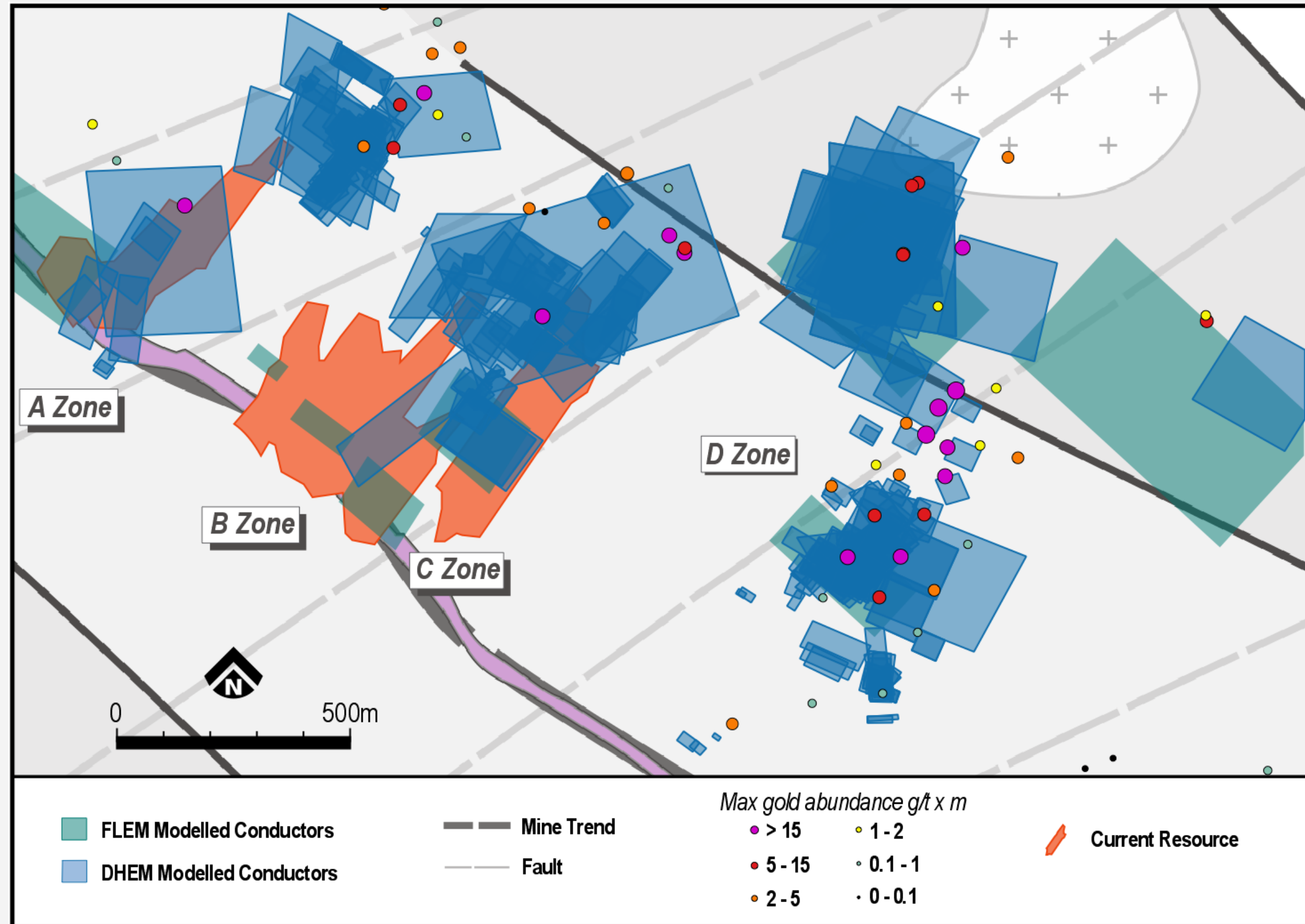
50,000m drilling completed in 2021
20,000m drilling completed first 6 months 2022

6 new mineralized zones discovered by Benz; five discoveries in 2021 alone



GOLD DISCOVERIES

D ZONE: SPECTACTULAR HIGH GRADE GOLD



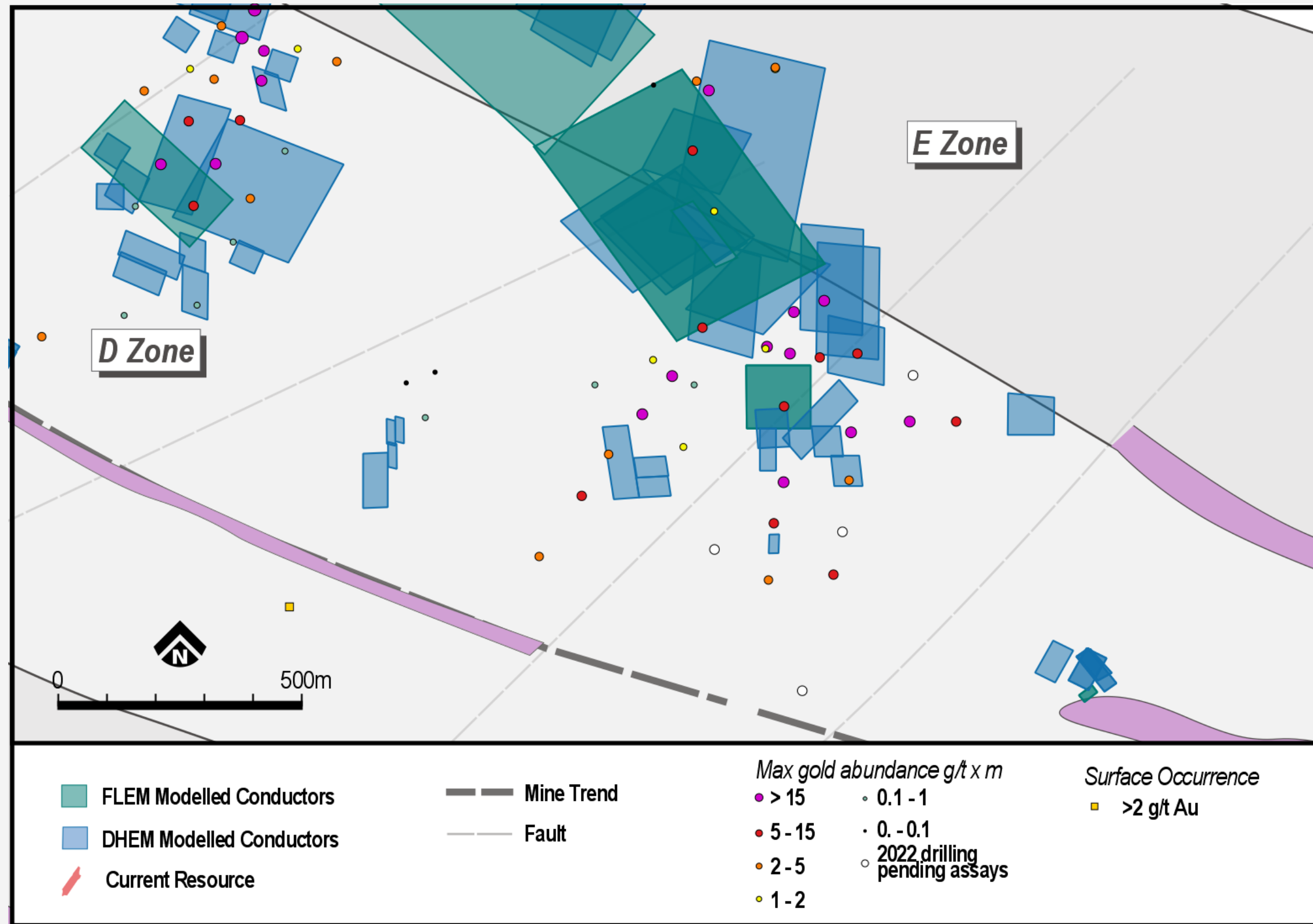
D ZONE

D Zone had only been sparsely drilled historically; EM led to the best parts of the system. Drilled over 1200m x 400m

Results from D Zone – combination of grade and thickness:

- 7.9m at 35.9g/t gold incl 1.0m at 268.8g/t gold
- 6.6m at 9.8g/t gold incl 1.0m at 36.7g/t gold
- 6.2m at 9.7g/t gold incl 1.0m at 23.4g/t gold
- 2.0m at 12.0g/t gold incl 1.0m at 23.4g/t gold
- 1.5m at 16.4g/t gold
- 5.3m at 3.5g/t gold incl 1.3m at 6.0g/t gold
- 1.0m at 8.34g/t gold

E ZONE: BLIND DISCOVERY WITH STELLAR GRADES



E ZONE

High-grade blind discovery at E Zone with mineralization drilled over 1000m x 500m

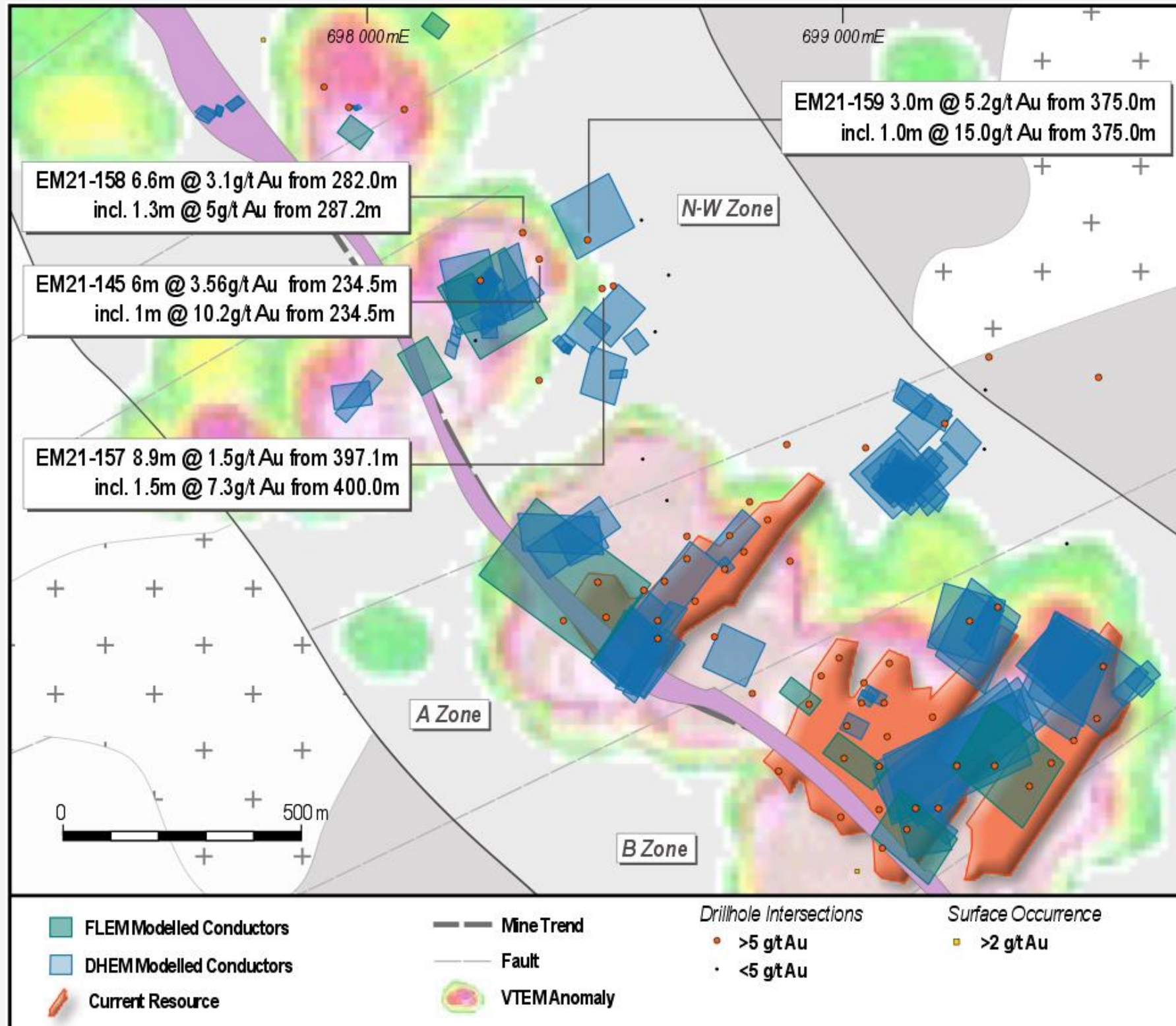
Highest grade to date with **1.0m a 365.5g/t gold** at the shallow depth of 81.0m

New style of mineralization discovered associated with a tonalite intrusion with visible gold observed



EM 21-229: 1.0m at 365.5g/t gold from 81.0m

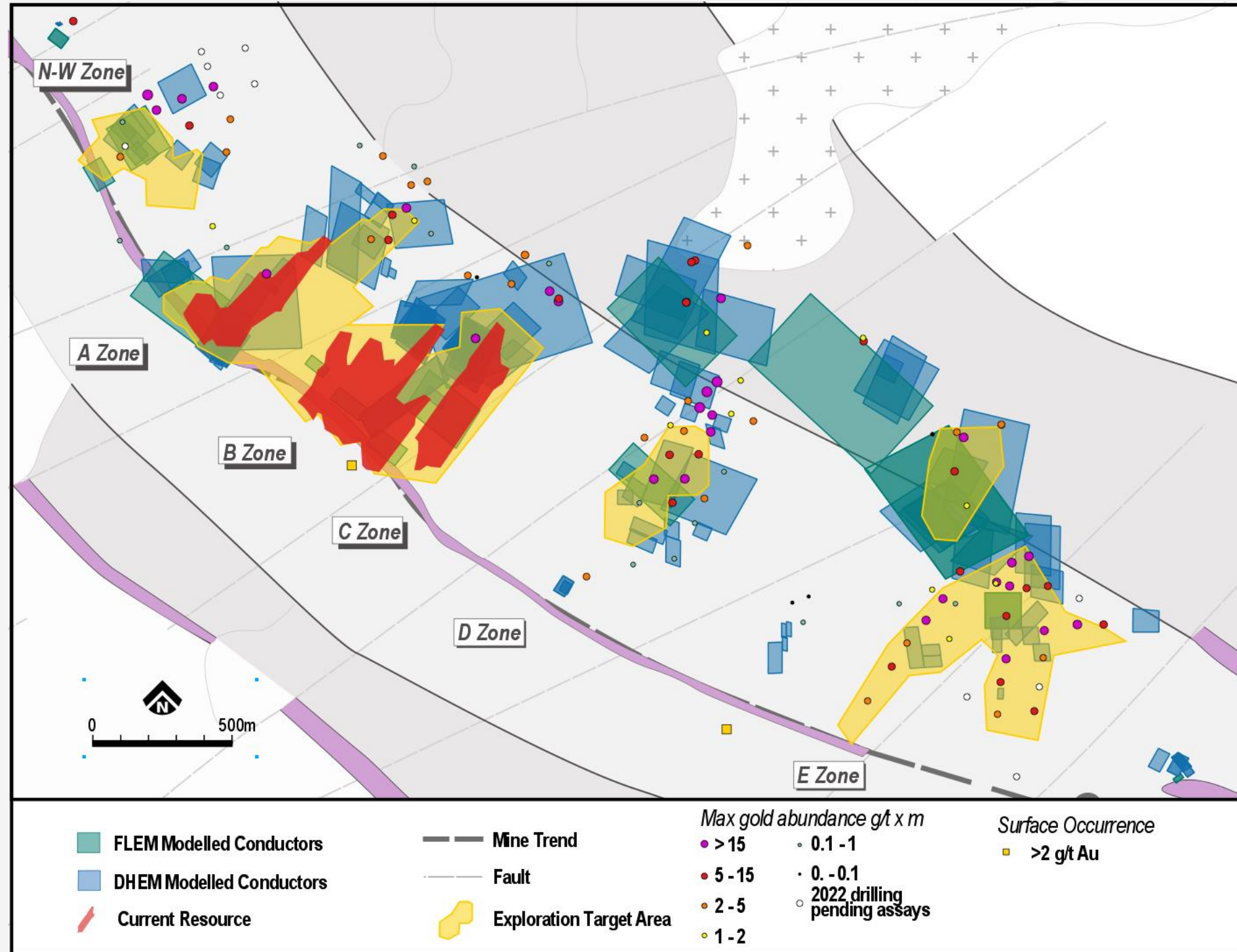
NW ZONE: A DISCOVERY WITH MORE TO COME



NW ZONE

- NW Zone is a high-grade zone discovered by Benz in 2021
 - EM established continuity of the high-grade mineralization where historical drilling (based purely on geological targeting) failed
-
- 400m x 500m zone
 - The confirmation of a second high grade mineralized horizon in the footwall potentially doubling the footprint:
 - 8.9m at 1.5g/t gold incl 1.5m at 7.3 g/t gold
 - 2.5m at 7.4g/t gold
 - 1.5m at 32.8g/t gold
 - 7.8m at 8.7g/t gold
 - 6.0m at 3.6g/t gold

EXPLORATION TARGET – A PATHWAY TO PROJECT GROWTH



Exploration Target¹

- Tonnage range 2.5Mt to 3.9Mt of additional mineralization
- Grade range: 5.7g/t to 7.0g/t gold
- Between 0.46 and 0.88Moz of mineralization in addition to the existing resource of 376koz at 7.9g/t Au²

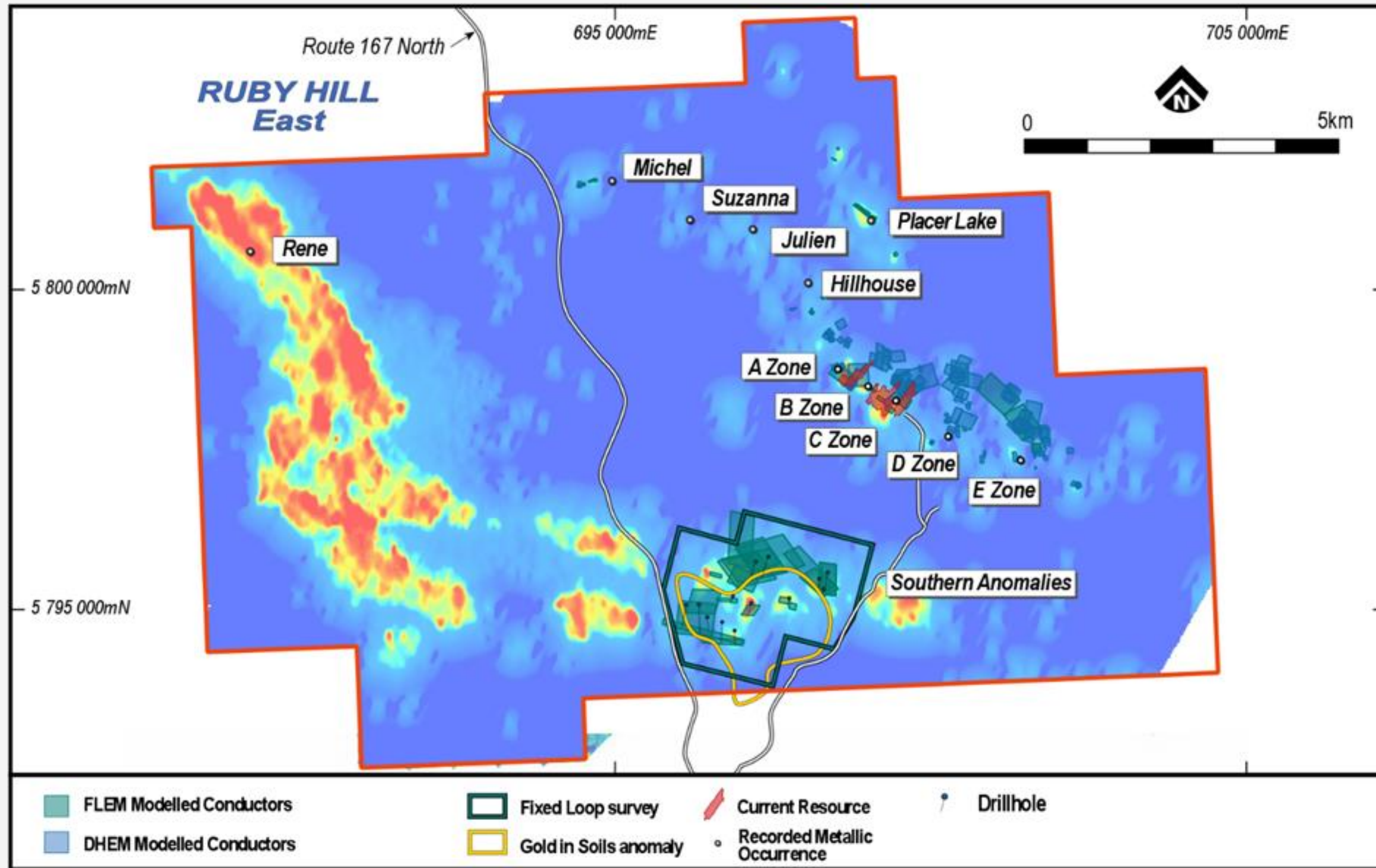
Conservative approach:

- Only includes the Mine Horizon and E zone Upper shear.
- None of the new mineralized trends in this target
- None of the Tonalite mineralization at E Zone in this target

Target ¹		Tonnes Range (Mt)	Grade (g/t)	Gold target (Moz)
Mine Horizon A, B, C depth extensions, NW and D Zones	lower	1.8	5.90	0.34
	higher	2.9	7.20	0.67
E Zone	lower	0.7	5.3	0.12
	higher	1	6.6	0.21
Total	lower	2.5	5.7	0.46
	higher	3.9	7.0	0.88

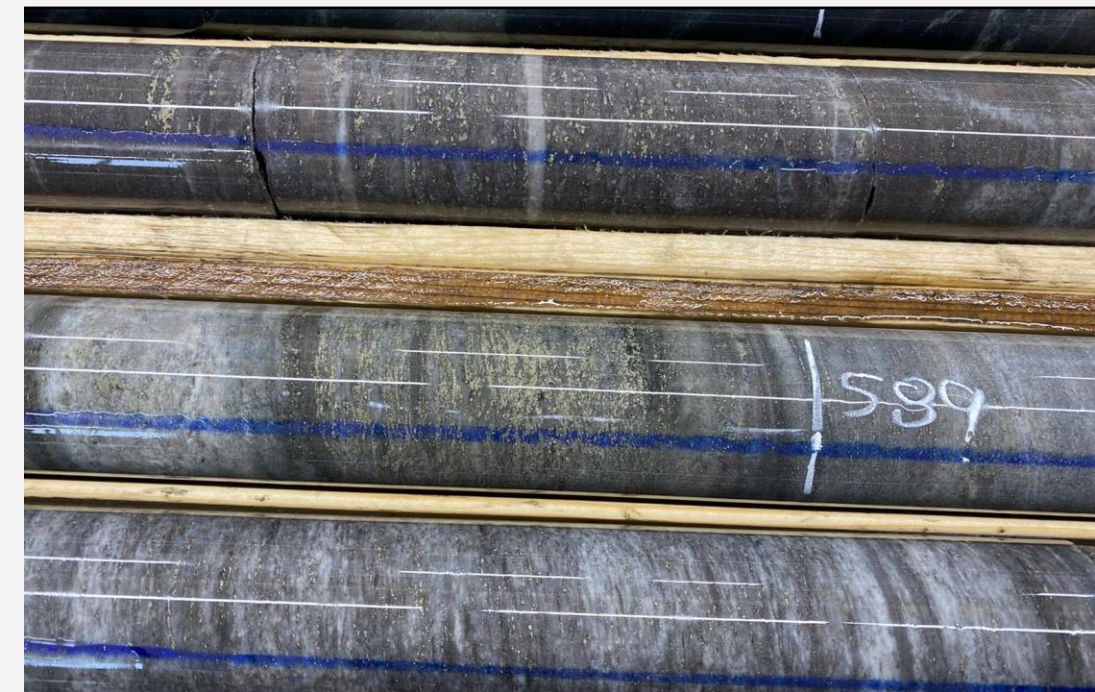
¹The potential quantity and grade of the Exploration Target is conceptual in nature and is therefore an approximation. There has been insufficient exploration drilling results to estimate a Mineral Resource and it is uncertain if further exploration will result in the estimation of a Mineral Resource. **The Exploration Target comes in addition to the existing mineral resource estimate.** ²See ASX Release dated 21/12/2020 Prospectus.

SOUTHERN ANOMALIES – LARGE SCALE TARGETS



Southern Anomalies

- FLEM in 2022 identified multiple conductive zones with 41 plates modelled
- 13 holes drilled winter 2022
- Intersected conglomerates with sulphides and alteration
- Assays pending



LITHIUM, NICKEL & COPPER POTENTIAL



Outcropping spodumene lithium mineralization at Ruby Hill West

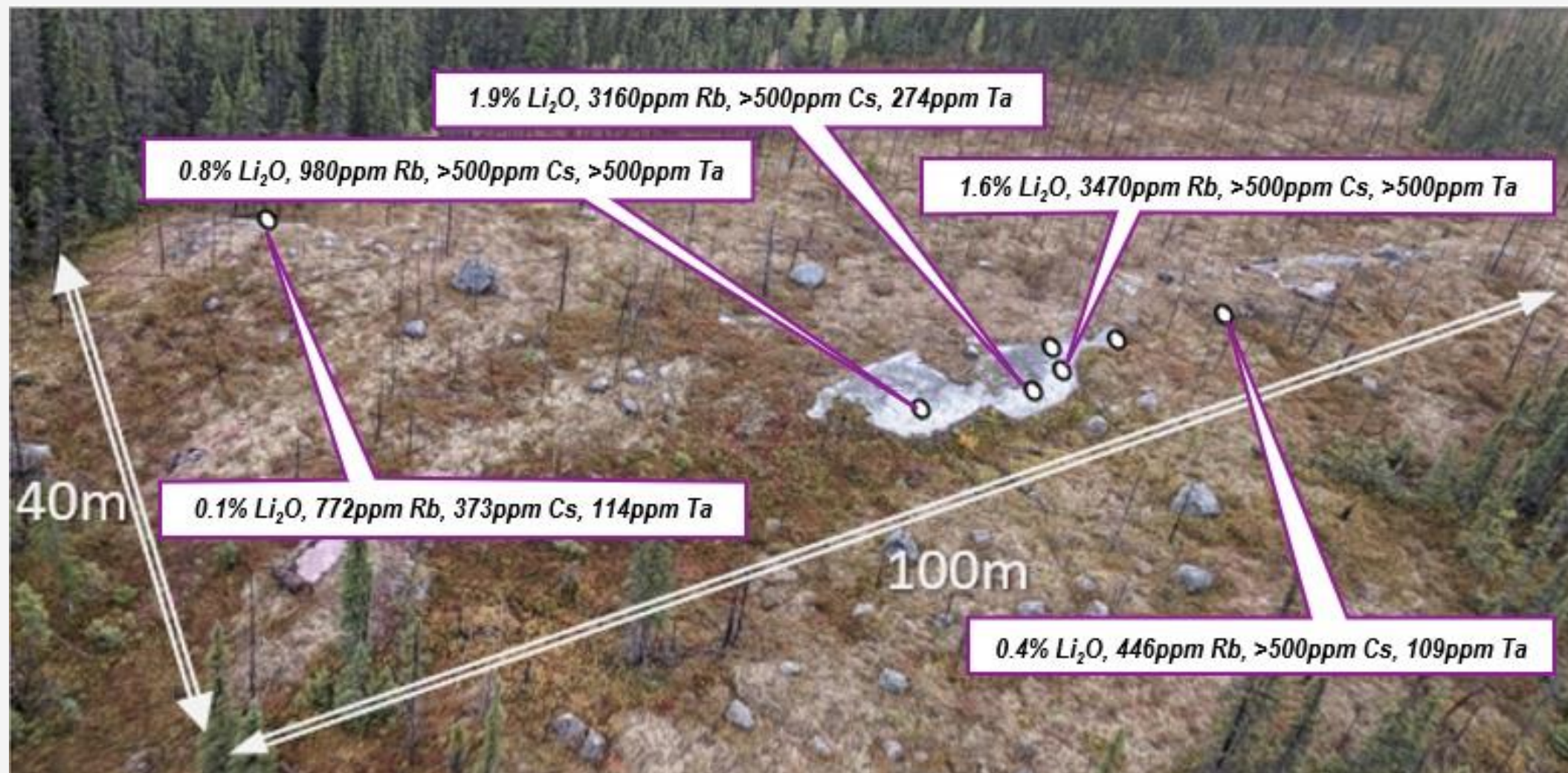
HIGH-GRADE LITHIUM CONFIRMED AT RUBY HILL WEST



High-grade lithium mineralization confirmed over a large 100m x 40m outcropping area at Ruby Hill West

Rock chip sampling results (shown below) add to historical high-grade samples including:

- 4.7% Li_2O , 1720 ppm Rb (>100ppm Ta, >500ppm Cs)
- 2.6% Li_2O , 1970ppm Rb, 1030 ppm Ta & 7530 ppm Cs



Helicopter view of the Ruby Hill West lithium pegmatite outcrop with selected assay results from February 2022.



Coarse spodumene (lithium bearing pyroxene) in rock chip sample from Ruby Hill West pegmatite.

DRILLING CONFIRMS STRONG POTENTIAL AT RHW



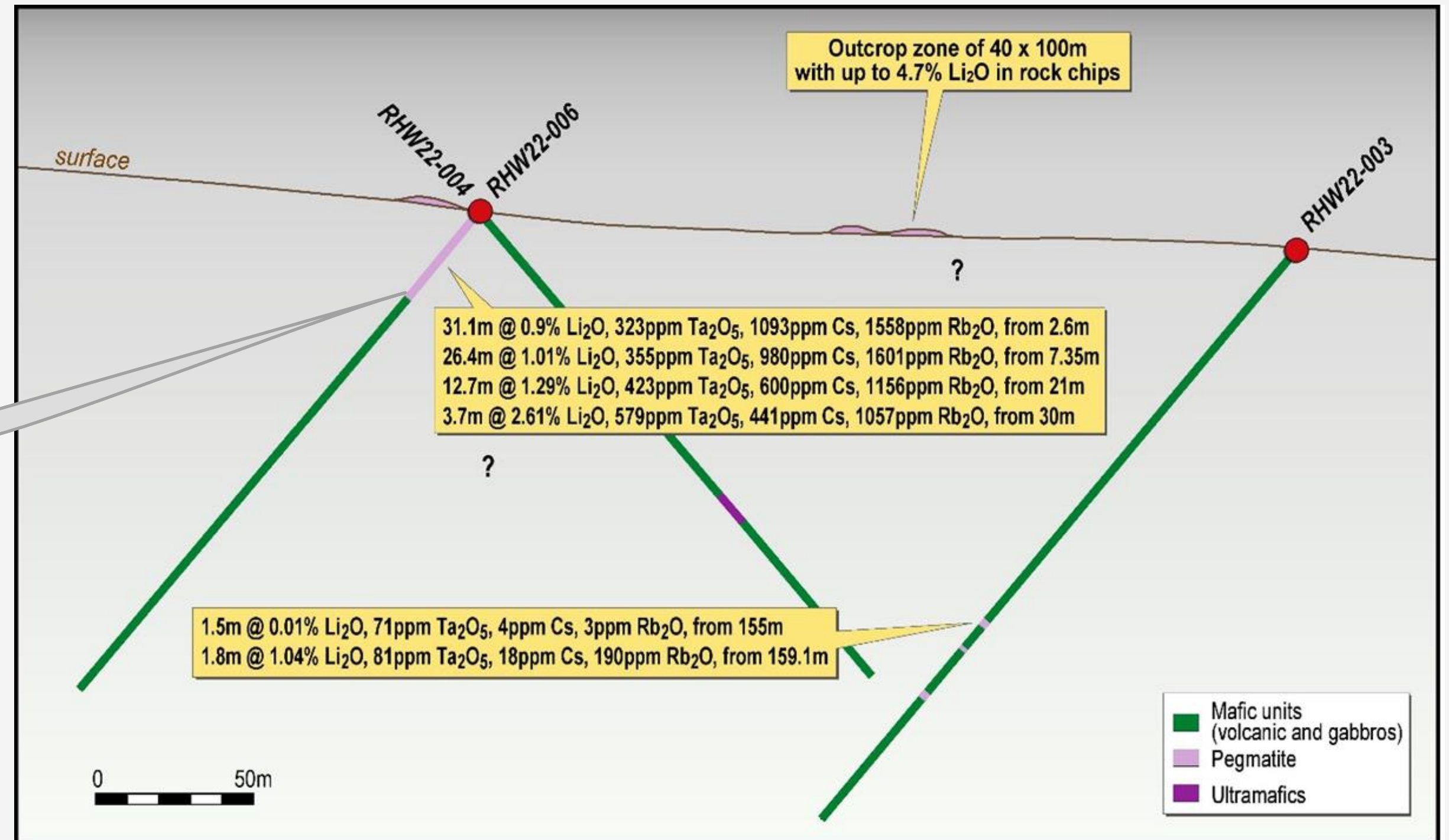
31.3m at 0.9% Li₂O including 12.7m at 1.3% Li₂O and 3.7m at 2.6% Li₂O in Benz' maiden drilling program Ruby Hill West

Large spodumene crystals

Multiple spodumene bearing pegmatite
Dykes intersected at RHW

Potential pegmatite dyke swarm

Strong Rb, Ta, Cs adding value



STRONG POTENTIAL HIGHLIGHTED BY RECENT FIELD WORK



Pegmatite outcrop stripping June/July 2022 Ruby Hill West

Outcrop stripping has exposed massive spodumene bearing pegmatite between first pass drillholes oriented near parallel to drilling

Core from 2008 drilling for gold at Ruby Hill West discovered in the core yard at Eastmain shows 80m of late pegmatite originally logged as granite

Assays from regional rock chips sampling campaign conducted June 2022 pending

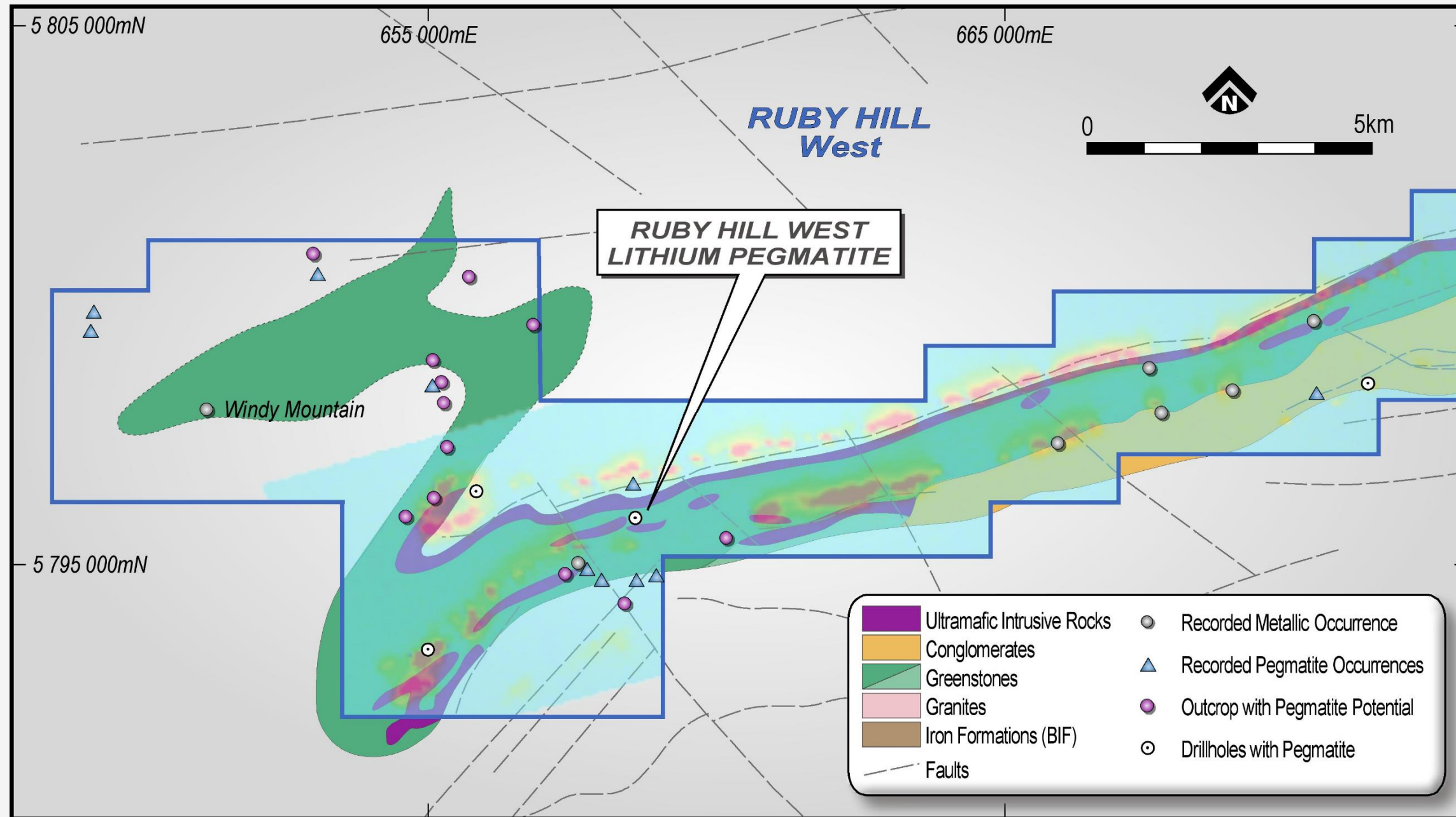


50cm long spodumene crystal in pegmatite near RHW22-006 collar



RHW08-003 Pegmatite interval (80m cumulative intercept)

LITHIUM CAMP POTENTIAL



Numerous mentions of pegmatites in historic reports

Newly discovered unsampled "pegmatitic granite" in core

~70km of prospective granite/greenstone contact under tenure

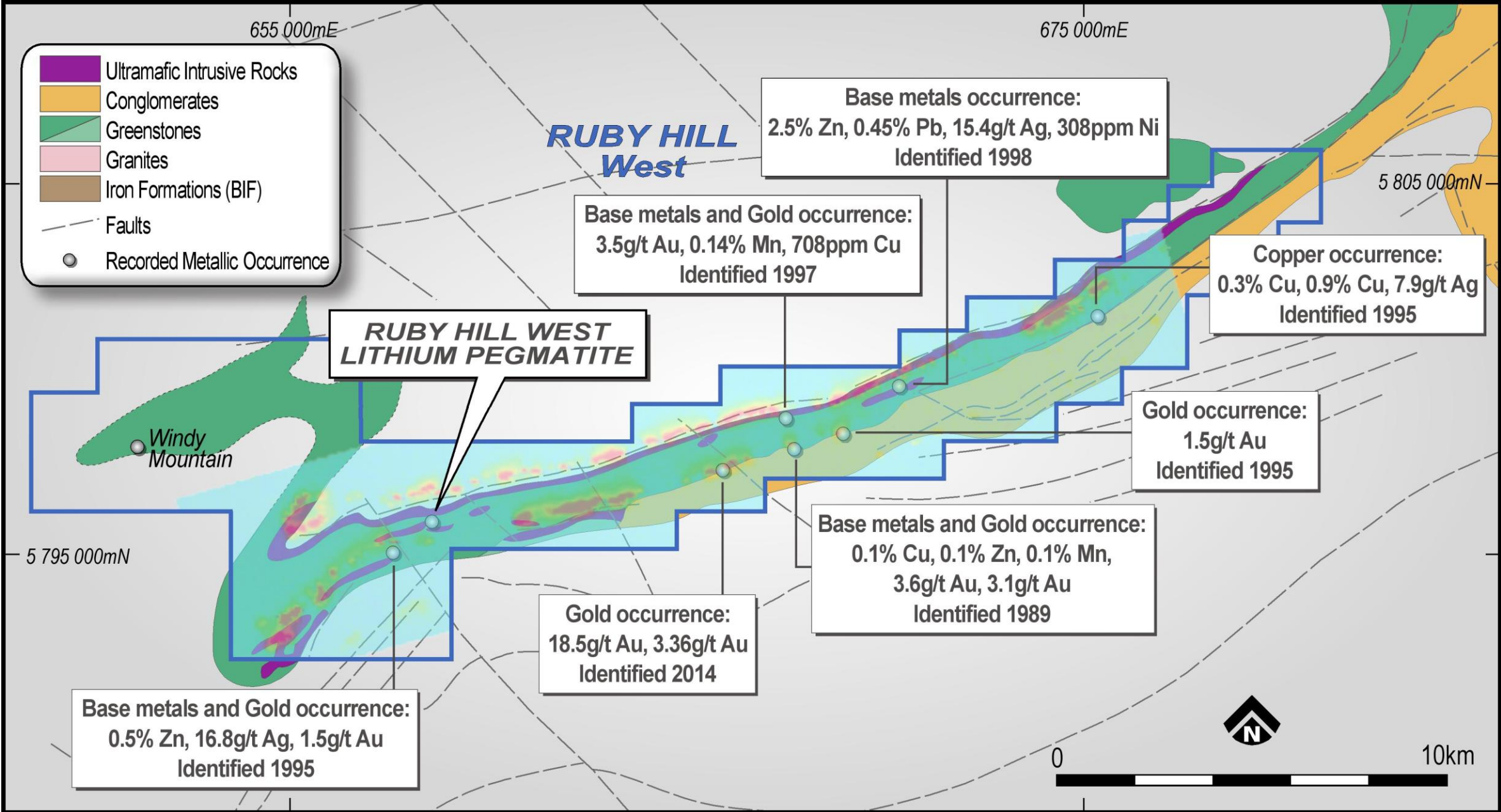
ADDITIONAL BASE METALS POTENTIAL AT RUBY HILL WEST



Multiple untested occurrences of base metals, in addition to gold

Coincident VTEM anomalies with mapped ultramafic contacts over 30km of cumulative strike

45km of strike length of greenstone to be explored



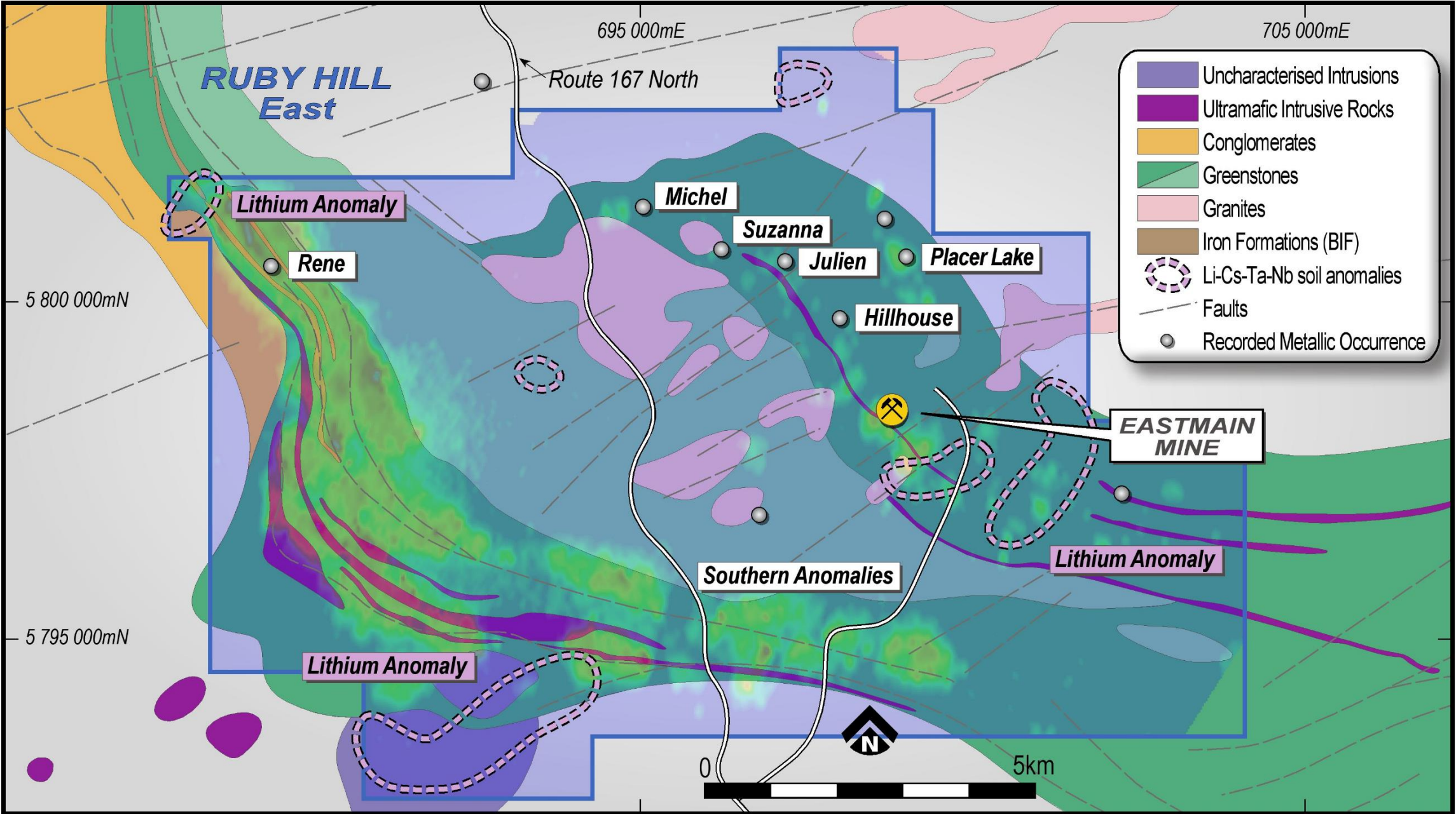
ADDITIONAL LITHIUM POTENTIAL AT RUBY HILL EAST



Multiple soils sampling anomalies with Lithium, Caesium, Tantalum, Niobium

3km x 1.5km soils anomalies located near poorly characterized intrusions in or near the greenstone/granite contact zone

30km of cumulative strike length of greenstone/granite contact (N and S) to be explored



OUTSTANDING INFRASTRUCTURE



Route 167 – An All Weather Road



Fully Permitted Camp



Photo credit: Chrysos Corp



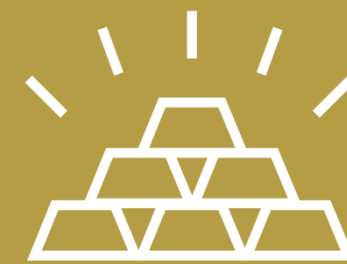
Photo credit: Chrysos Corp

INVESTMENT HIGHLIGHTS



MULTI-COMMODITY BELT SCALE OPPORTUNITY

- Emerging multi-million ounce gold camp, plus lithium, nickel and copper potential confirmed.
- Over 250km² tenure and >45km strike across Upper Eastmain greenstone belt.
- Significant discovery potential in a Tier 1 jurisdiction.



RESULTS ACHIEVED TO DATE

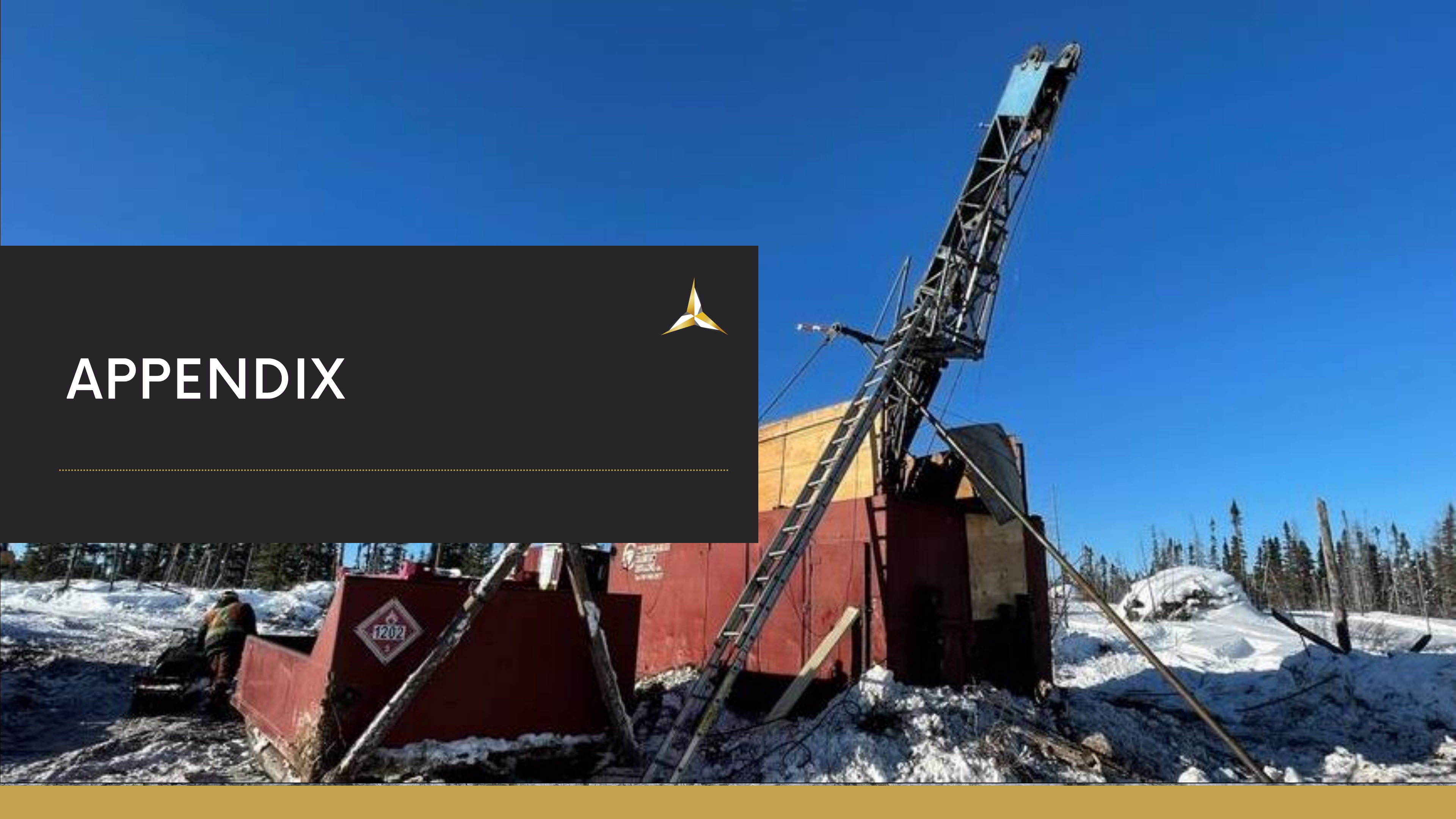
- 400+ DHEM conductors and 6 mineralized gold zones have been identified by Benz.
- Regional exploration shows strong VTEM anomalies.
- Confirmed lithium pegmatite discovery in February 2022.



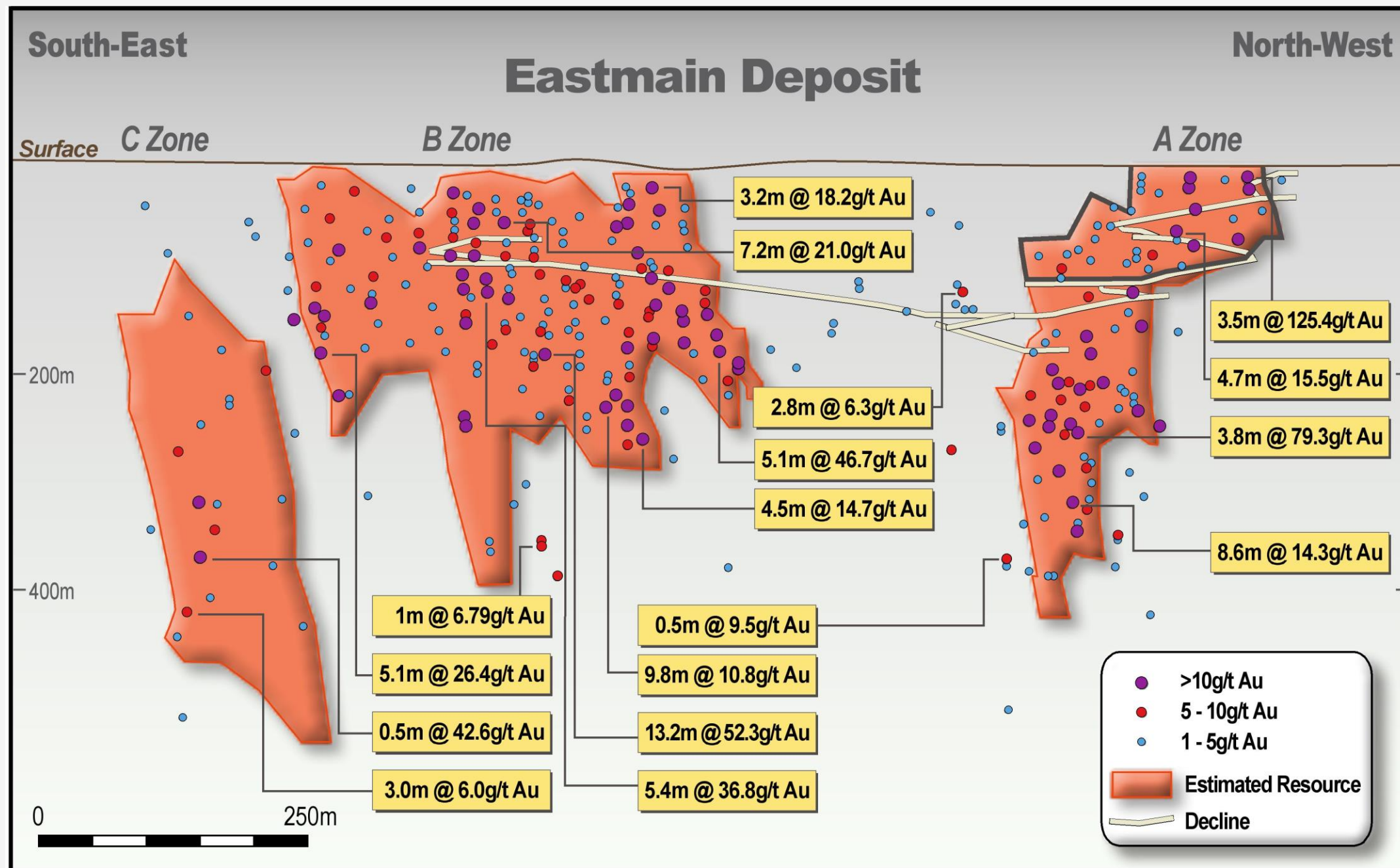
PROVEN DISCOVERY APPROACH

- Electromagnetics (EM) successfully employed to make gold discoveries at new depths.
- EM is a technique that is both low cost and minimally invasive to the surrounding environment.

APPENDIX



EASTMAIN - EXISTING HIGH-GRADE GOLD RESOURCE



EASTMAIN DEPOSIT - A, B & C ZONES

Existing 376,000oz at 7.9g/t gold resource

Historically mined 118,000t of ore at 10.5g/t gold at >95% recovery

Resource area does not include recent Benz discoveries

Maximum depth of current resource is 400m, substantial extension potential down plunge/dip

CATEGORY	TONNES	GRADE (g/t Au)	GOLD (oz)
Indicated	899,000	8.19	236,500
Inferred	579,000	7.48	139,300
TOTAL	1,478,000	7.91	375,800

EXPERIENCED BOARD AND MANAGEMENT



EVAN CRANSTON

Executive Chairman

- B. Comm, LLB from University of Western Australia, former corporate lawyer with over 15 years experience with the mining industry. Principal of advisory services firm Konkera Corporate.



PETER WILLIAMS

Director

- M.Eng.Sc in Geophysics from Colorado School of Mines, with over 35 years of global exploration experience and a track record of discoveries.



NICK TINTOR

Director

- BSc. in Geology from the University of Toronto with over 30 years of professional experience in the Canadian mining industry.



MATTHEW O'HARA

Director

- B.Com. from University of Western Australia and Chartered Accountant (CA ANZ). Acted as independent director, company secretary and CFO of numerous resource companies.



XAVIER BRAUD, MAIG

CEO

- M.Sc. In Geology from Universite Paris XI, Ecole Normale Superieure de Paris and Universite de Cergy-Pontoise, exploration geologist with over 15 years experience.



**DANIELLE GIOVENAZZO,
P.GEO**

Vice President - Exploration

- Ph.D. in Geology from Universite du Quebec a Chicoutimi with over 35 years global experience with an emphasis on Quebec and West Africa.



MARAT ABZALOV, FAUSIMM

Special Consultant

- Ph.D. in Geology from Kola Science Center of the Russian Academy of Sciences with over 40 years of global geological experience.



MARCUS HARDEN, MAIG

Special Consultant

- BSc. Geology (Hons), recently Chief Geologist of AuTECO Minerals, Head of Regional Exploration for Bellevue Gold Ltd with over 15 years of experience

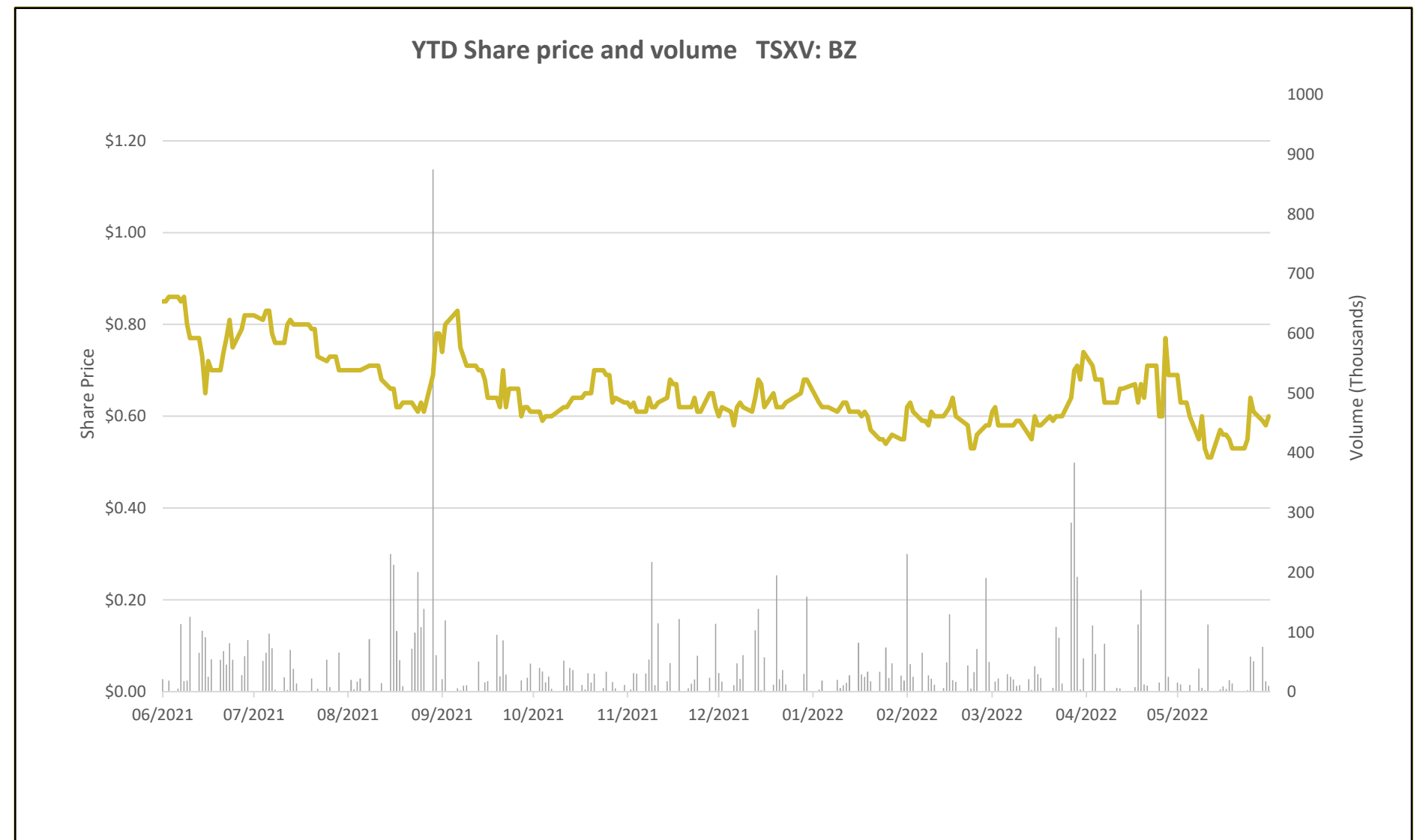
CORPORATE SUMMARY



Analyst Coverage: Ian Spence



SYMBOL: TSXV:BZ ASX:BNZ	
Common Shares Outstanding	109,254,665
Warrants (C\$0.12 – C\$1.00)	49,849,518
Options (C\$0.07 – C\$3.00)	7,457,213
Top 20 Shareholders	~50%
Current Share Price ¹	C\$0.46
Market Capitalisation ¹	C\$49.8m
Cash ²	C\$2.7m



1. Share price and market capitalization as at 03 June 2022. 2. Cash as at 30 April 2022

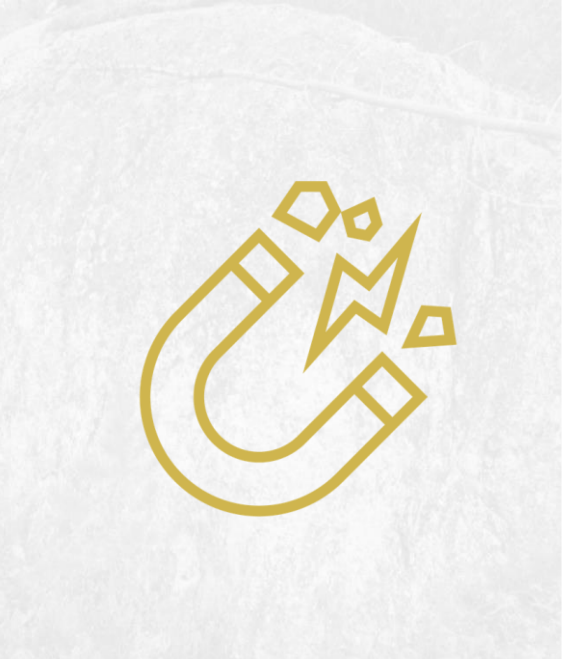
SUSTAINABLE PRACTICES MEETING ESG EXPECTATIONS



The PhotonAssay is another green initiative adopted by the company as it produces less fumes than the fire assay



With one of the largest hydro power schemes in the world only 200km away, there is potential for Benz to produce 'green' gold (image obtained from Andritz Group)

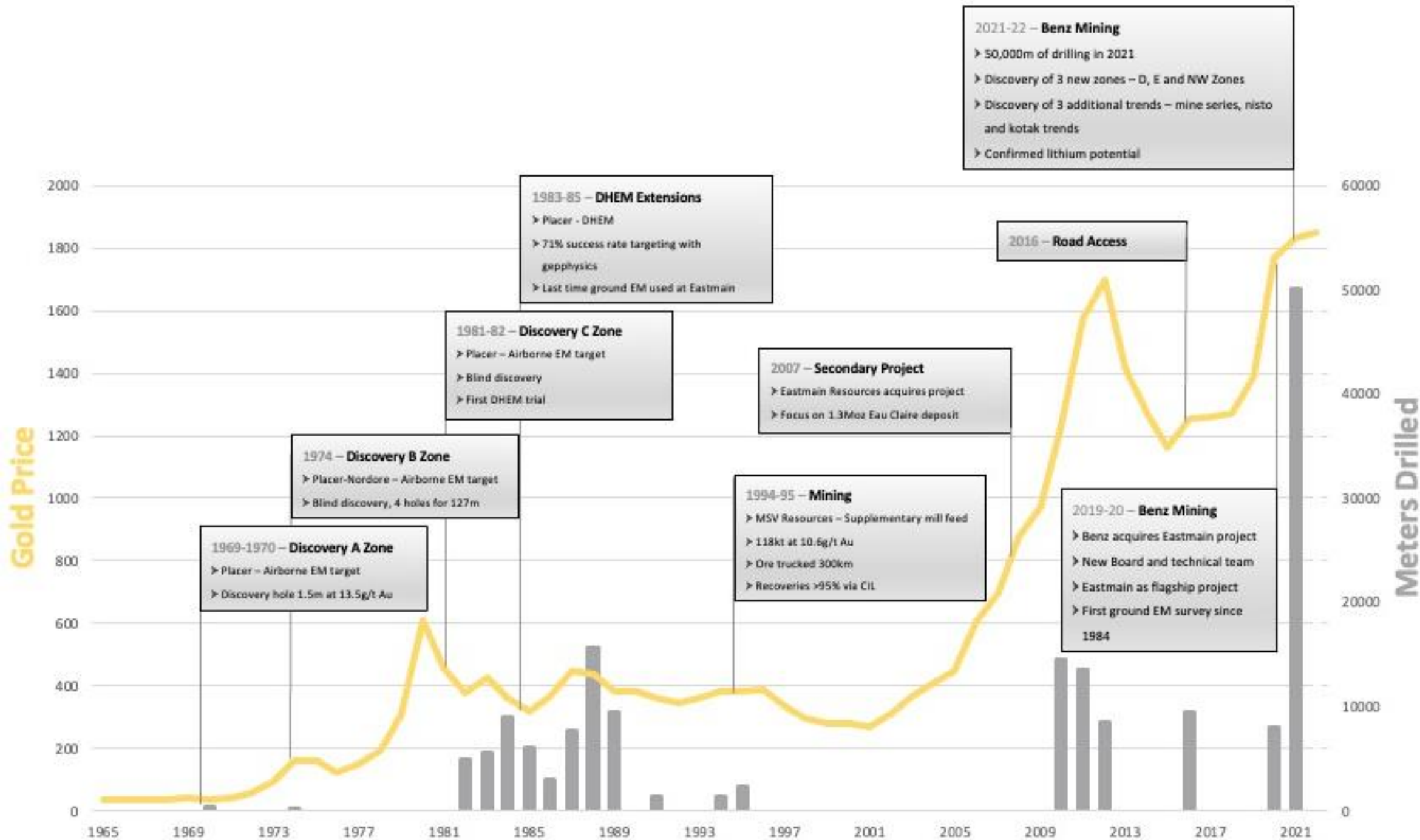


EM is a more environmentally friendly exploration technique as it is minimally invasive and reduces the amount of drilling required



Benz has provided employment to people from the local community

A GOLDEN PAST AND A MULTI-COMMODITY FUTURE



- Historical drilling: 115,000m over 40 years (1980 – 2020)

- Very prospective but previously too expensive to drill due to lack of road access

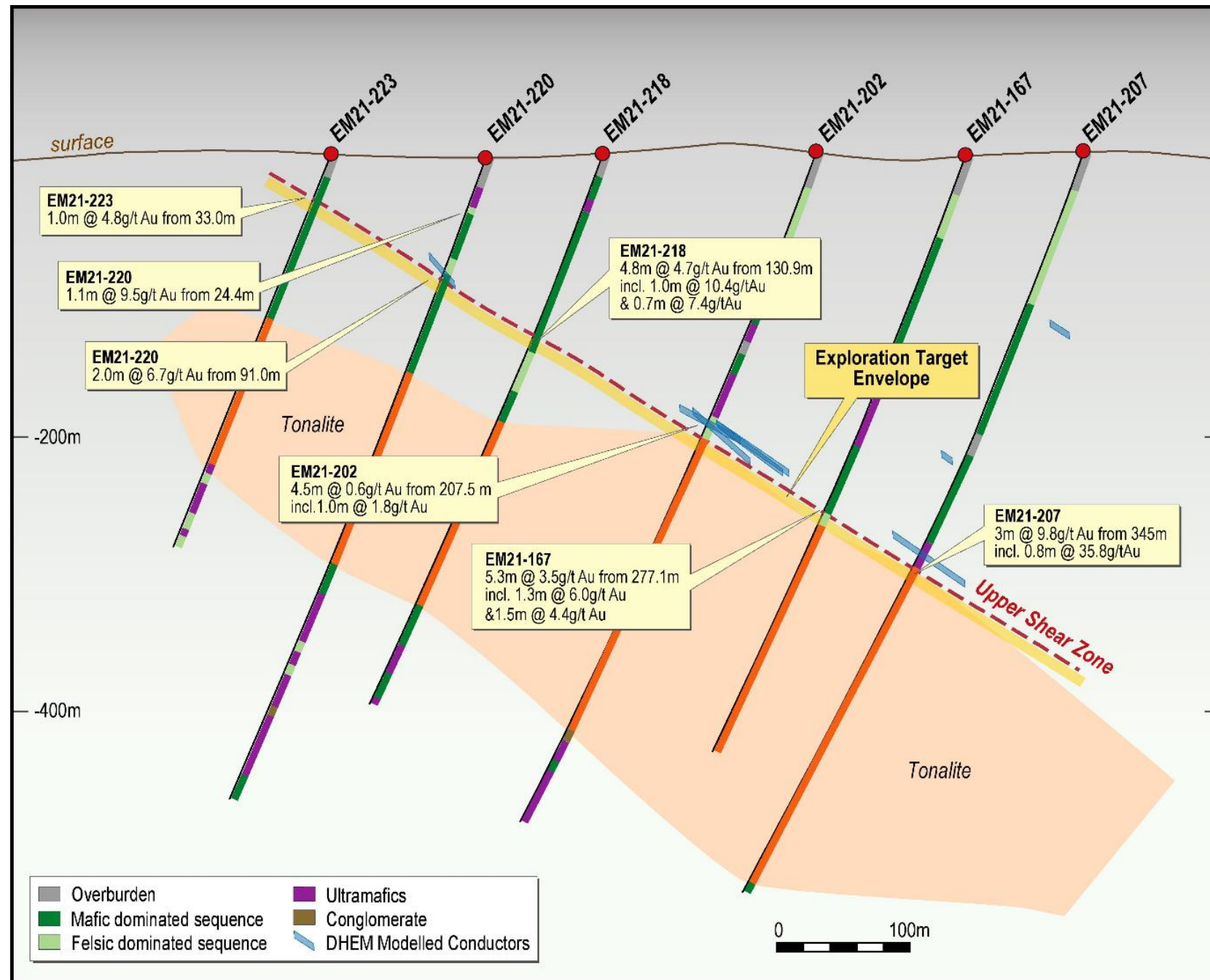
- Benz acquires project in 2019 and employs EM to target gold zones – with very high accuracy

- Benz drilling commences 2020

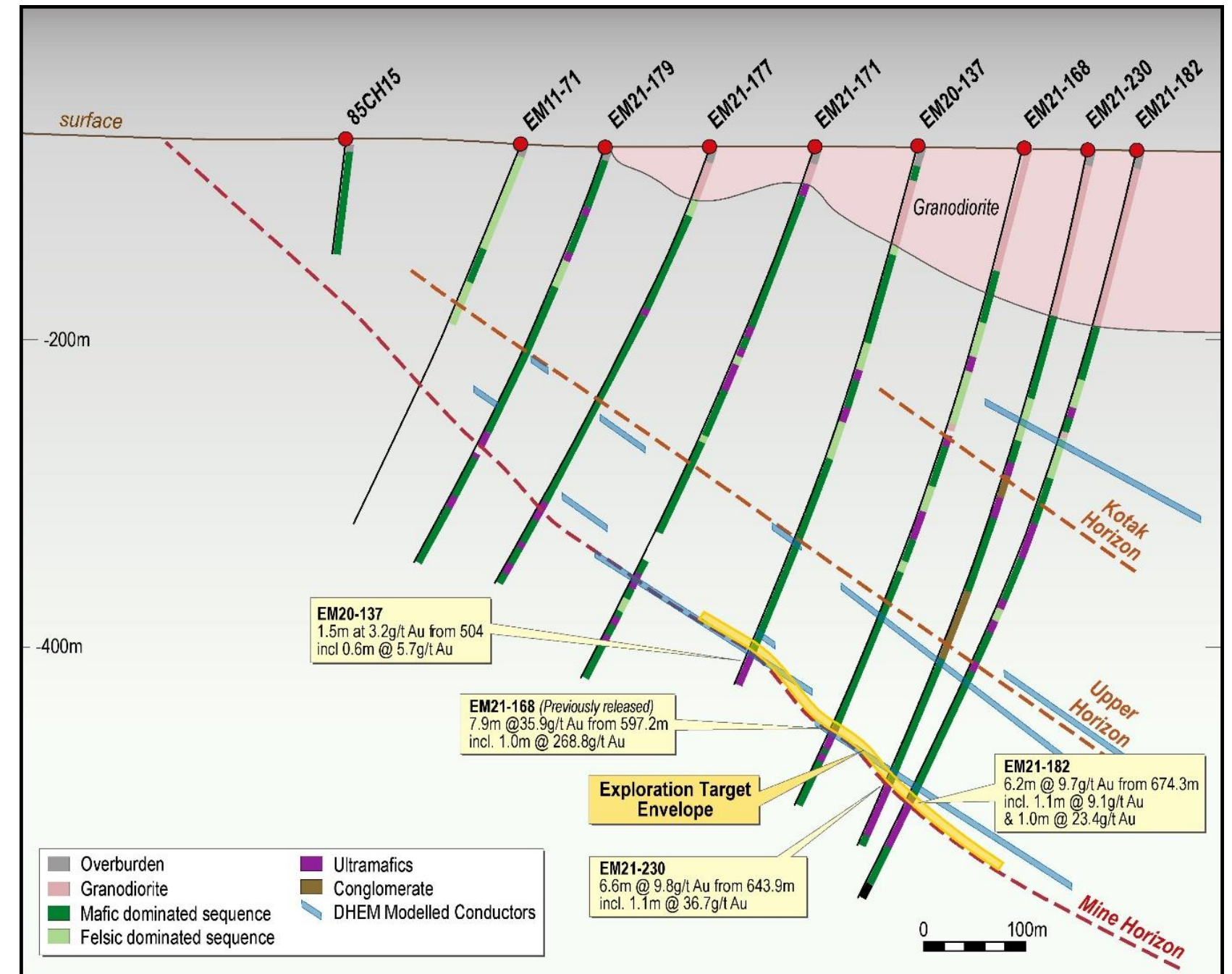
- 6 new gold discoveries achieved in 18 months; plus recently confirmed lithium potential

- Exploration potential is untapped – for gold, lithium and base metals

HIGH GRADE CONTINUITY IS THE KEY

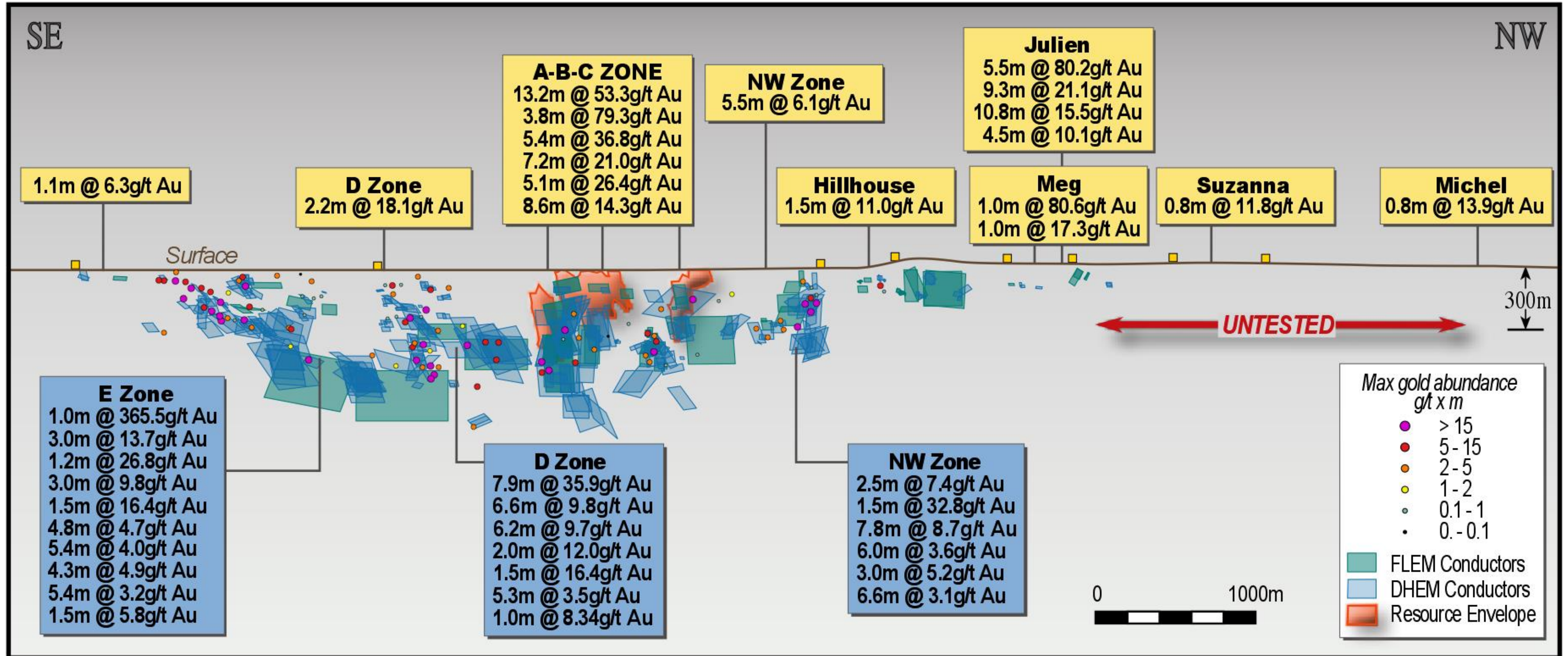


E Zone



D Zone

HIGH GRADE CONTINUITY IS THE KEY





BENZ MINING
CORP.

Contact Us

Xavier Braud | CEO
xbraud@benzmining.com

Dannika Warburton | Media & Investor Relations
dannika@investability.com.au

BENZMINING.COM | TSXV: BZ, ASX: BNZ

  @BenzMining